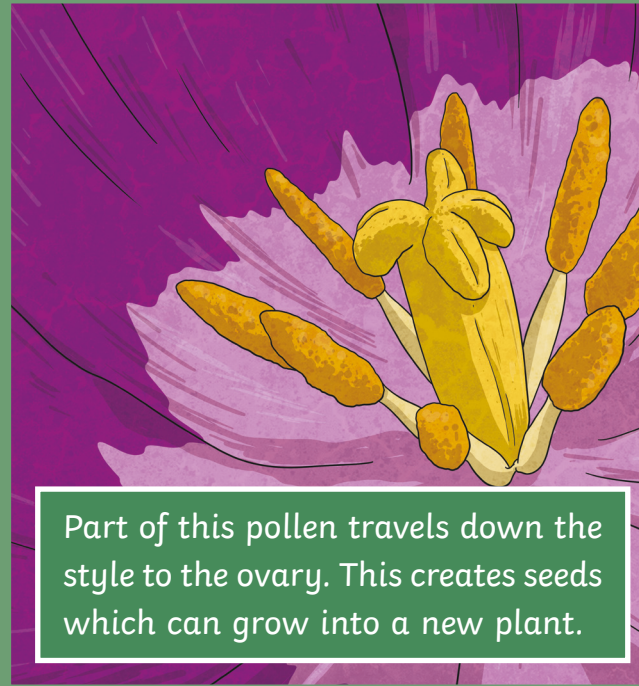


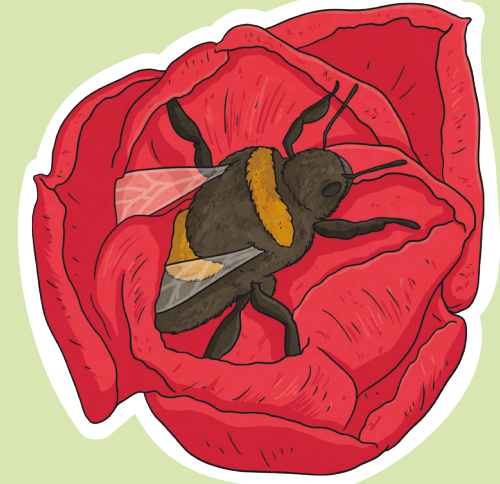


As the insect feeds on nectar from the new flower, the pollen from the first flower rubs onto the stigma of the second flower.



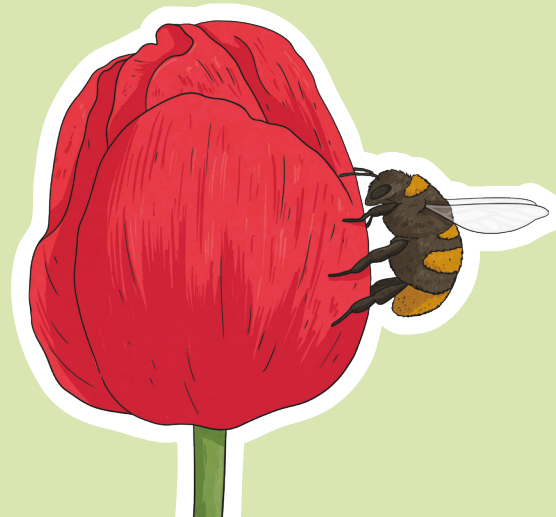
Part of this pollen travels down the style to the ovary. This creates seeds which can grow into a new plant.

The insect lands on the flower to collect nectar (a food for insects).



When collecting nectar, the insect rubs against the flower's anthers. This rubs pollen onto the insect.

The colour and smell of the flower attracts the insect.



After collecting the nectar, the insect moves to another flower to get more nectar.